

# Orientation Day

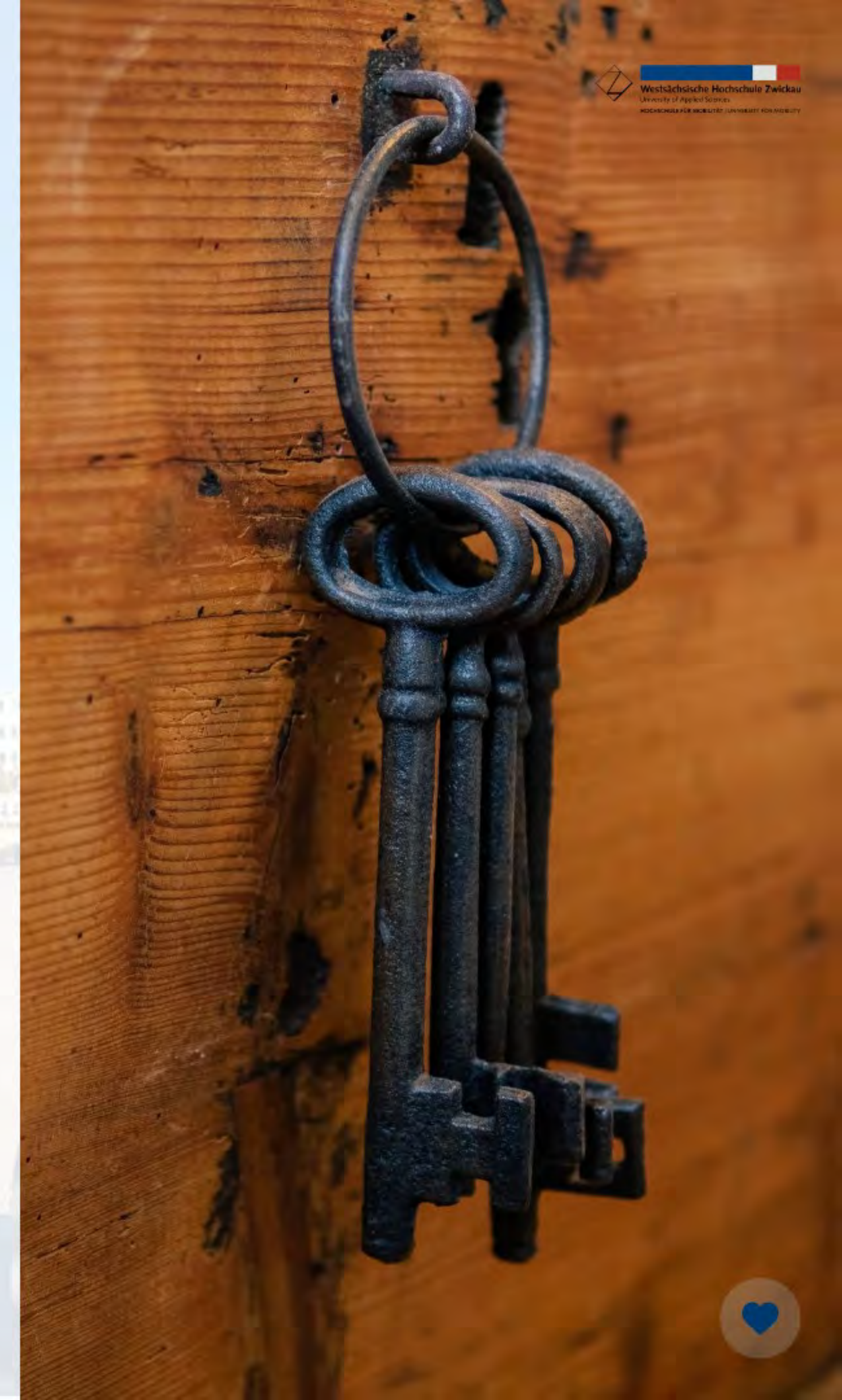
for International Students





## Key Points

- Introduction of contact persons in the International Office and Student Union
- Corona and its effect on everyday study life
- Travelling with the semester ticket, but where to?
- Important documents and systems and where to find them
- German language courses & tandem program
- Project INTEGRA and Language Corner
- Quiz: What do you know about Zwickau?





# Greetings

from the Rector and the Head of the International Office







**Welcome Speech by the Rector Prof. Dr.-Ing. Stephan Kassel**







**Welcome Speech by the Head of the International Office Mr. Tilo Wodzinski**







**Team of the International Office**



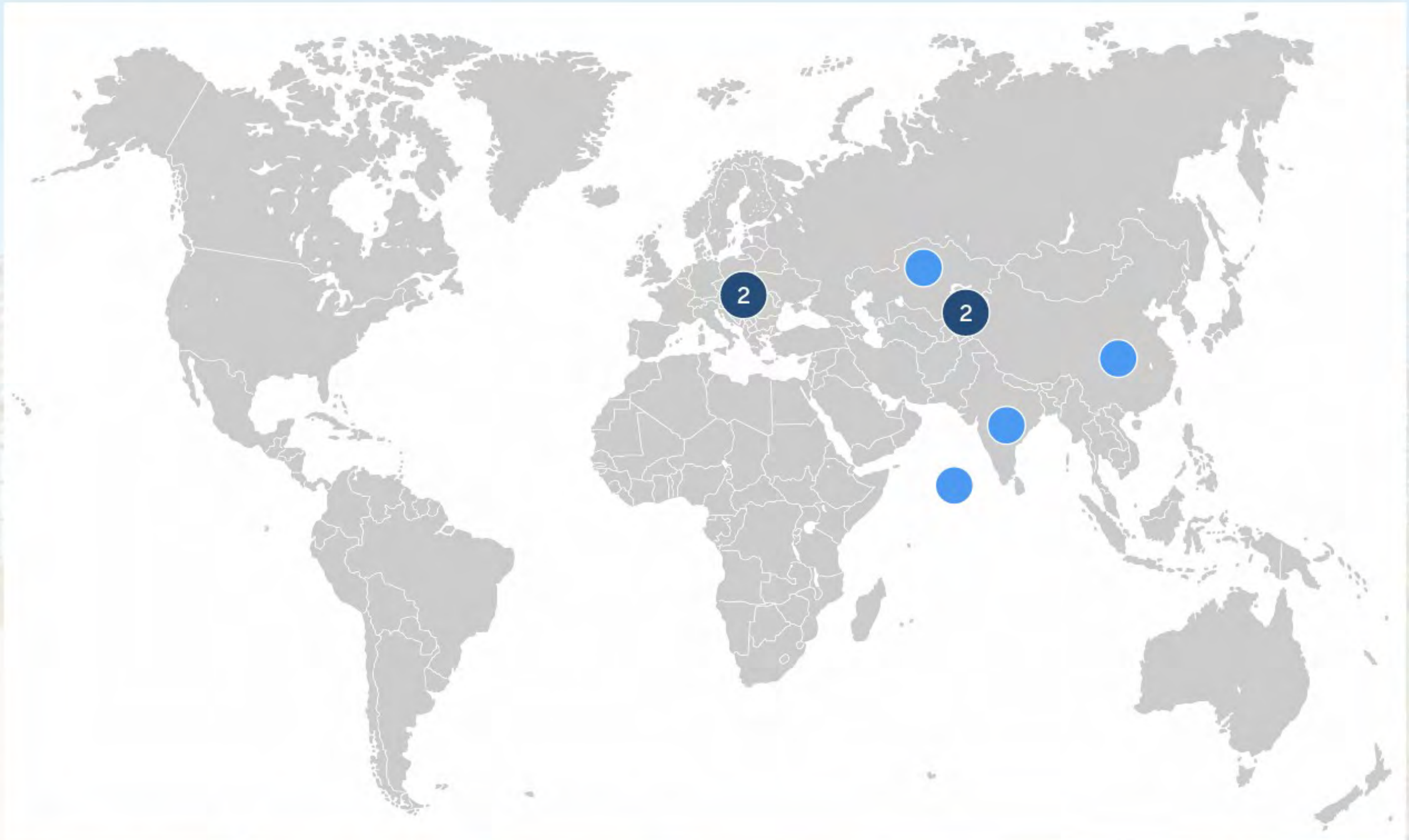


**Get to know each other!**





# Where are you from?





# What are you going to study in Zwickau?

Informatik

Languages and intercultural communication

languages and intercultural communication

Logistics and Engineering

Road traffic engineering

Getting to know German culture

Getting to know German culture



# What do you expect from your time in Zwickau?

To study in zwickau and explore sachen

Getting to know German culture

Make new friends

Have an internship or related thing to practice skills

Erfahrung



# What topics would you like to be informed about today?

1 questions  
0 upvotes





# Corona

and its effect on everyday study life





## CORONA indicator for the study section of the University of Applied Sciences Zwickau (WHZ)

valid since 21.09.2021

The decision on the currently valid level is made weekly in the Rector's Office.

The change to a lower level can be made if the incidence rates for the lower level have been reached for one consecutive week.

Data source: [RKI COVID-19 Germany \(arcgis.com\)](https://www.arcgis.com)

| Location-related Criteria   | Level |
|---|-------|
| Incidence rate < 10 at the WHZ location                             | 1     |
| Incidence rate $\geq$ 10 at the WHZ location                        | 2     |
| Hospital overload situation according to §2 Abs. 5 SächsCoronaSchVO | 3     |

| Measure \ Level             | 1   | 2   | 3  |
|-----------------------------|---|---|--|
| Hygiene measures            | According to hygiene concept  |   |  |
| Mouth Nose Protection       | -   | Medical Mouth Nose Protection                           |  |
| Access for students         | Access with proof of vaccination, proof of recovery or negative test (not older than 48h)   |   | Approval requirement for exceptional cases by the Head of the structural unit  |
| Access for staff            | Free access, test offer 2 times a week, obligatory testing 2 times a week for staff with customer or student contact (not applicable with proof of vaccination or recovery) |   | Approval requirement for exceptional cases by the Head of the structural unit  |
| Presence of staff in office | No restrictions   |   | Demand-oriented adaptation of the attendance work  |
| Teaching method             | Usually attendance classes  |   | Digital teaching, practical training in small groups (max. 10 people) with special permission from the dean                            |
| Exams                       | Usually in the university rooms   |   | Examinations in accordance with Senate resolutions and guidelines  |
| Service of the WHZ library  | No restrictions   | Access and workplace via ordering system                | Non-contact pick-up and drop-off of literature   |
| PC-pools                    | No restrictions   | Restricted use within the limits of the room capacities | No free access, access only in urgent cases upon request at the ZKI  |
| Service points for students | No restrictions   |   | Availability by e-mail and phone (IO also by video chat); No opening hours; appointments possible in urgent cases by prior arrangement |



# Inform yourself

- State of Saxony
- Administrative District Zwickau
- University Homepage







# Hygiene measures

- Keep distance (at least 1.5 m)
- Wash your hands regularly
- Wear medical mouth nose protection





# 3G

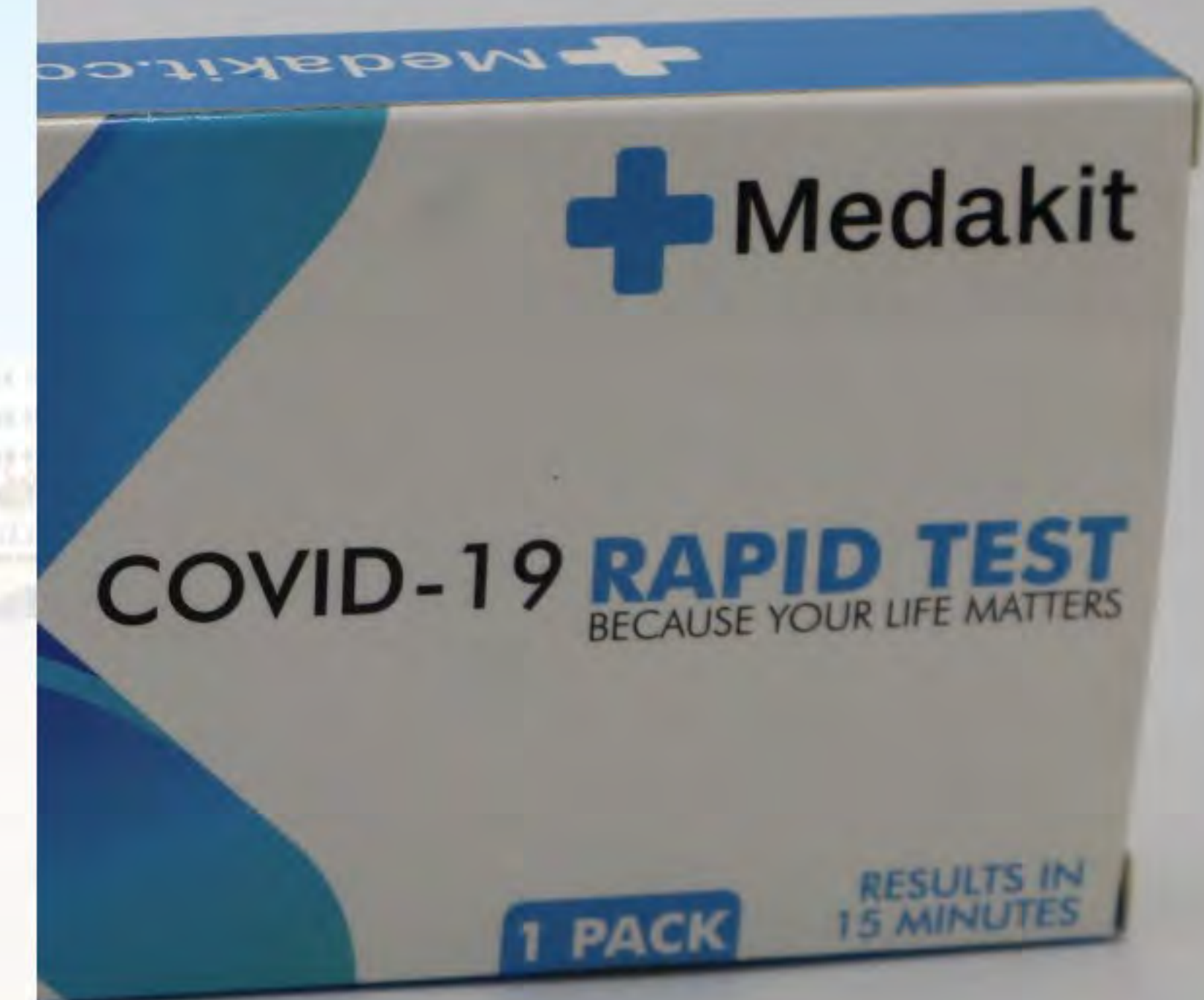
- Vaccinated (Geimpft)
- Recovered (Genesen)
- Tested (Getestet)
- will be controlled randomly





# Corona Tests

- not older than 48 h
- only official test centre
- costs 12€ / test
- until 31.12. free of charge for international students who have been vaccinated with a vaccine not officially recognised in the EU
- bring your Student ID, health insurance card and vaccination certificate
- test centres can be found on the website of the Administrative District Zwickau





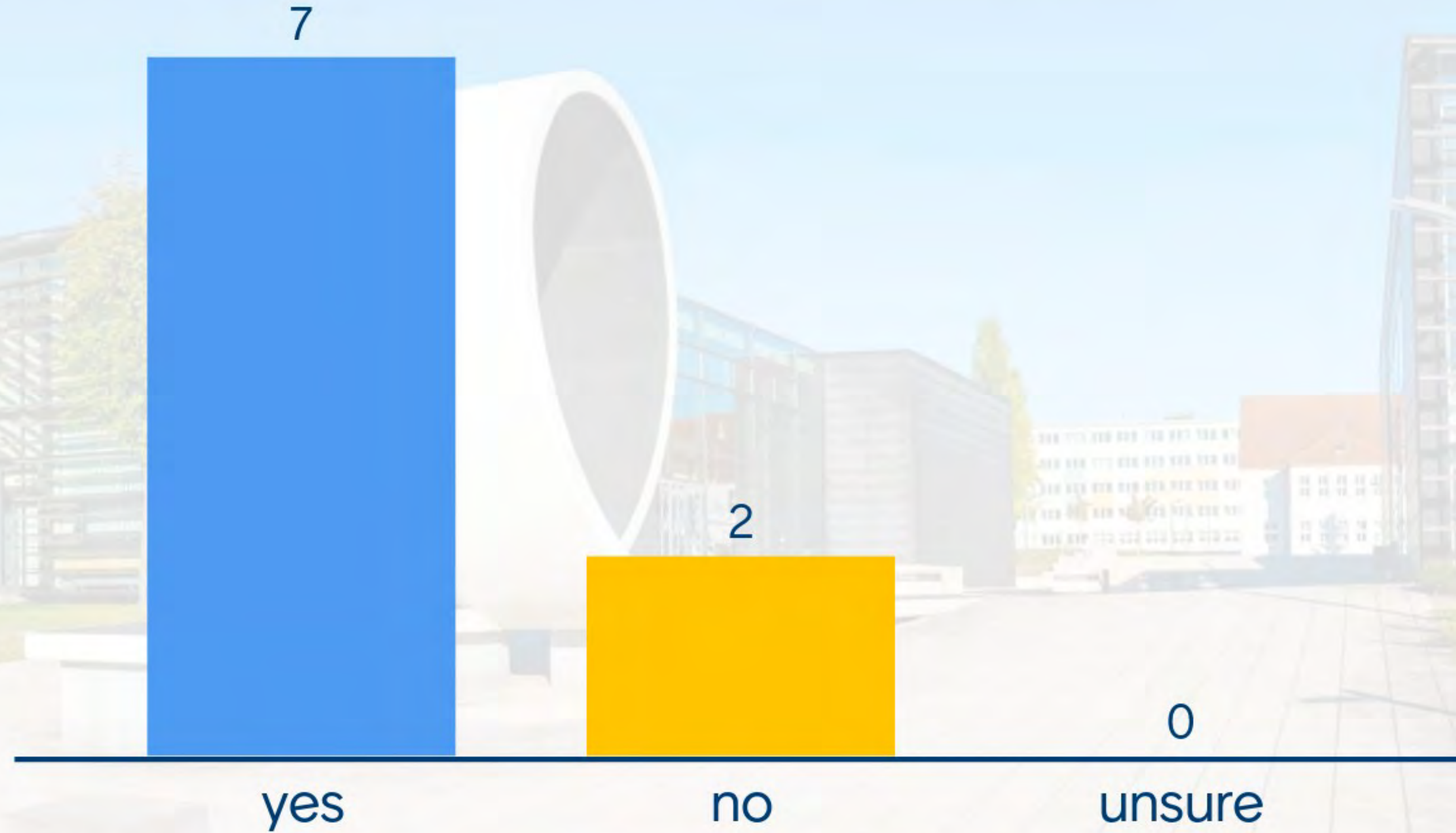
# Vaccination

- Availability of free vaccinations
- Take your health insurance card with you
- Query on interest in vaccination on university website
- Information on vaccination options on the German Red Cross website





# Who is interested in being vaccinated?







# Contact tracking

- QR codes on doors and in offices
- Corona Warn App needed for scanning
- Available in Play Store / Apple App Store
- Alternative: register in a list with the responsible person



# Any Questions?

**1 questions**  
**0 upvotes**



# Important documents and systems

and where to find them



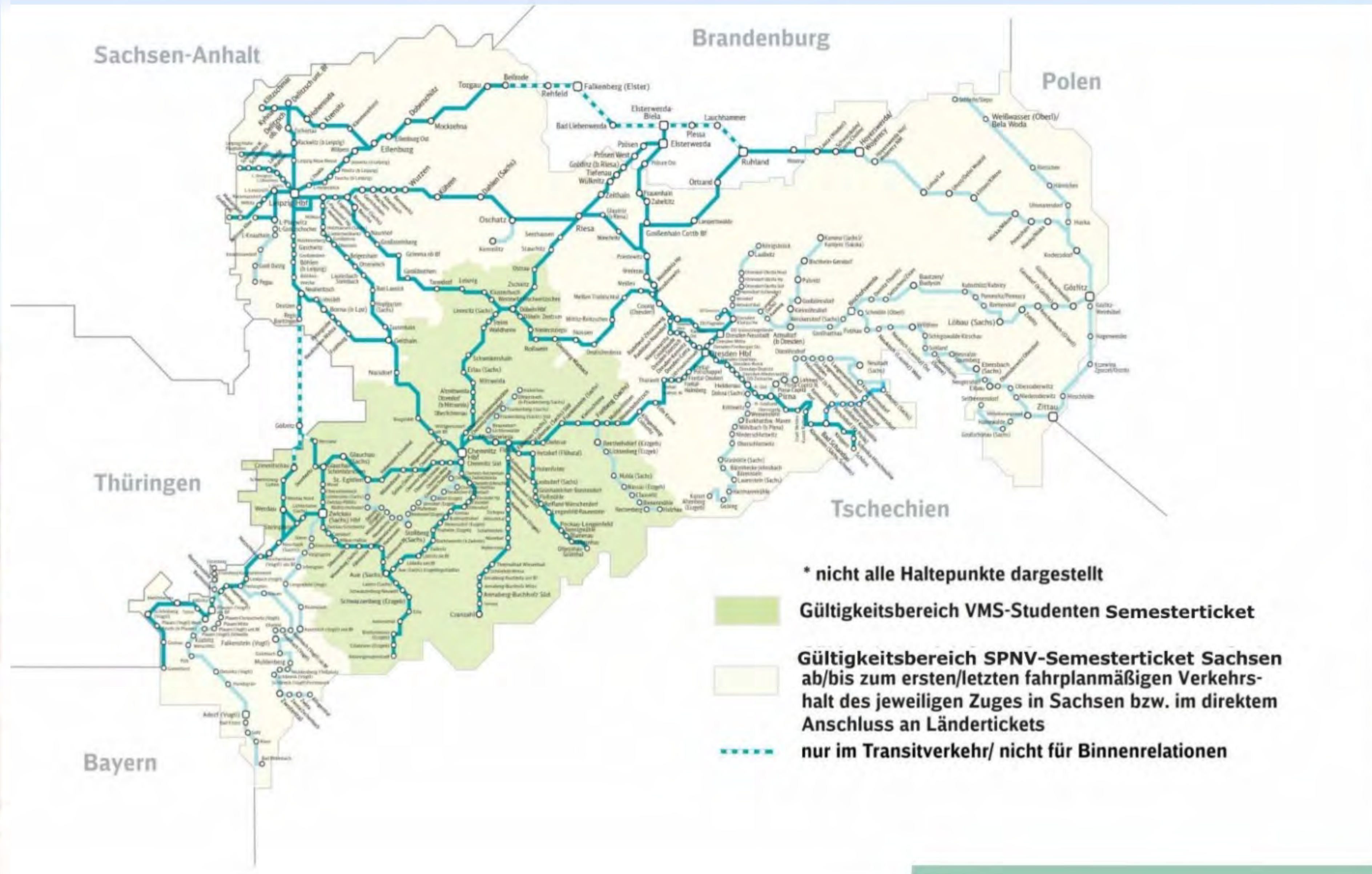


# Semesterticket

where it applies and what I can visit with it

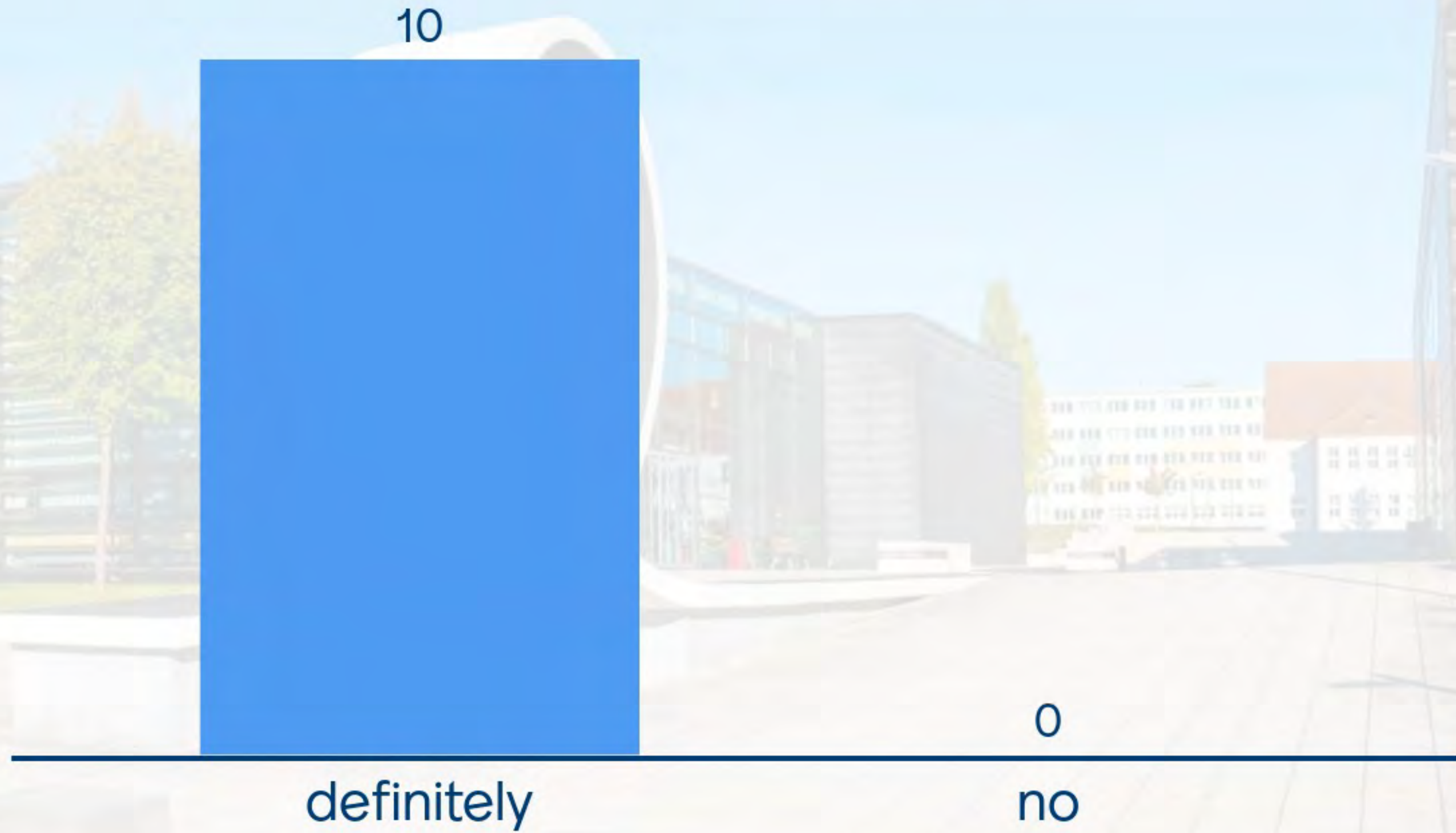








# Would you be interested in an event where famous travel destinations in Saxony are presented to you?







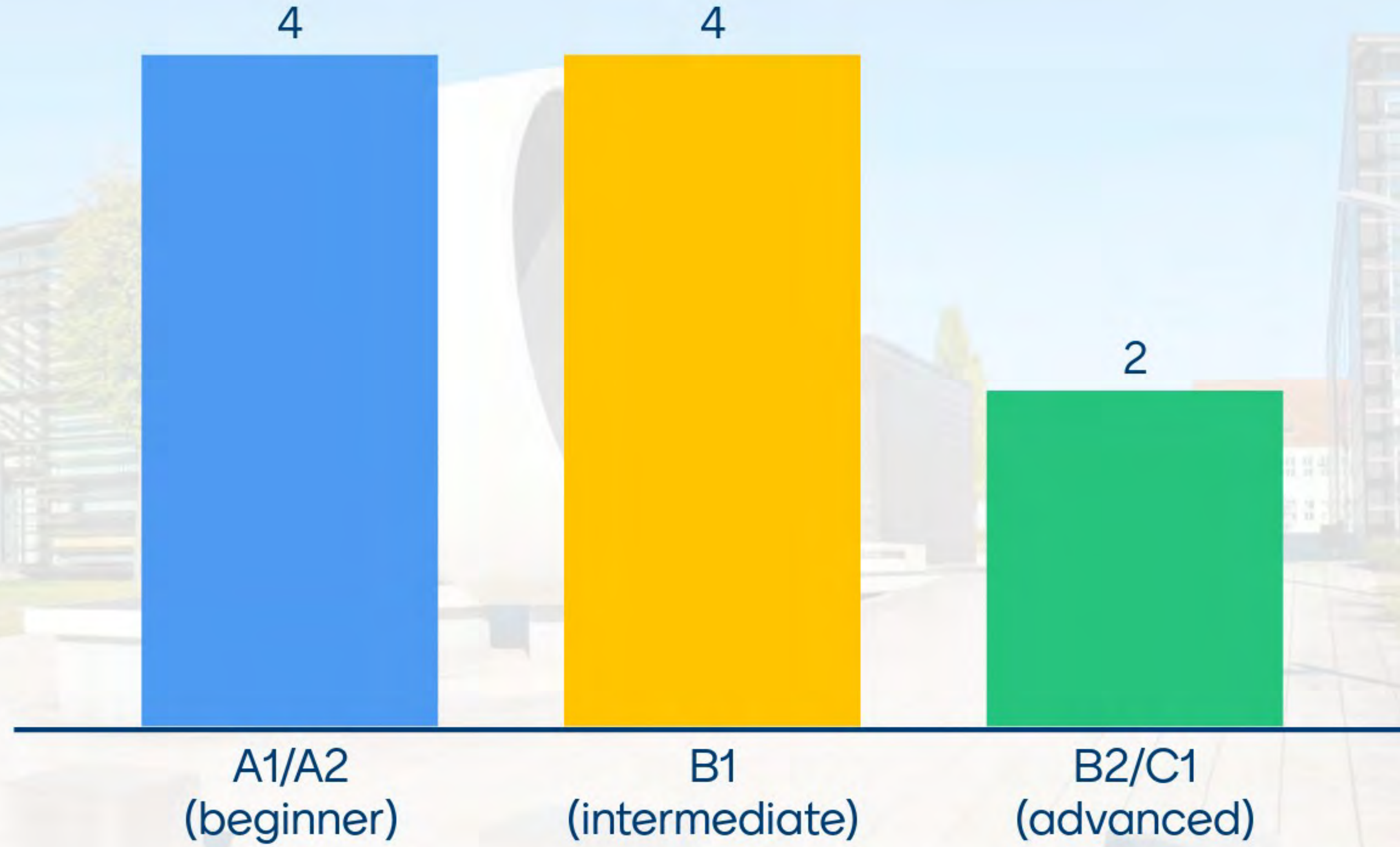
# Learn German

German courses  
Tandem programme





# Which level of German do you have?





# German courses at the WHZ

- A2
- B1
- B2
- Besser sprechen und schreiben
- Wirtschaftsdeutsch
- Fachdeutsch





# Further information

- Courses twice a week, 90 min
- Time table on the website (link in the chat)
- Courses start from 11.10.2021
- Questions? Contact the German teachers (mail addresses in chat)

Thomas.Edeling@fh-zwickau.de

Valentina.Knorr@fh-zwickau.de

Joana.Wels@online.de



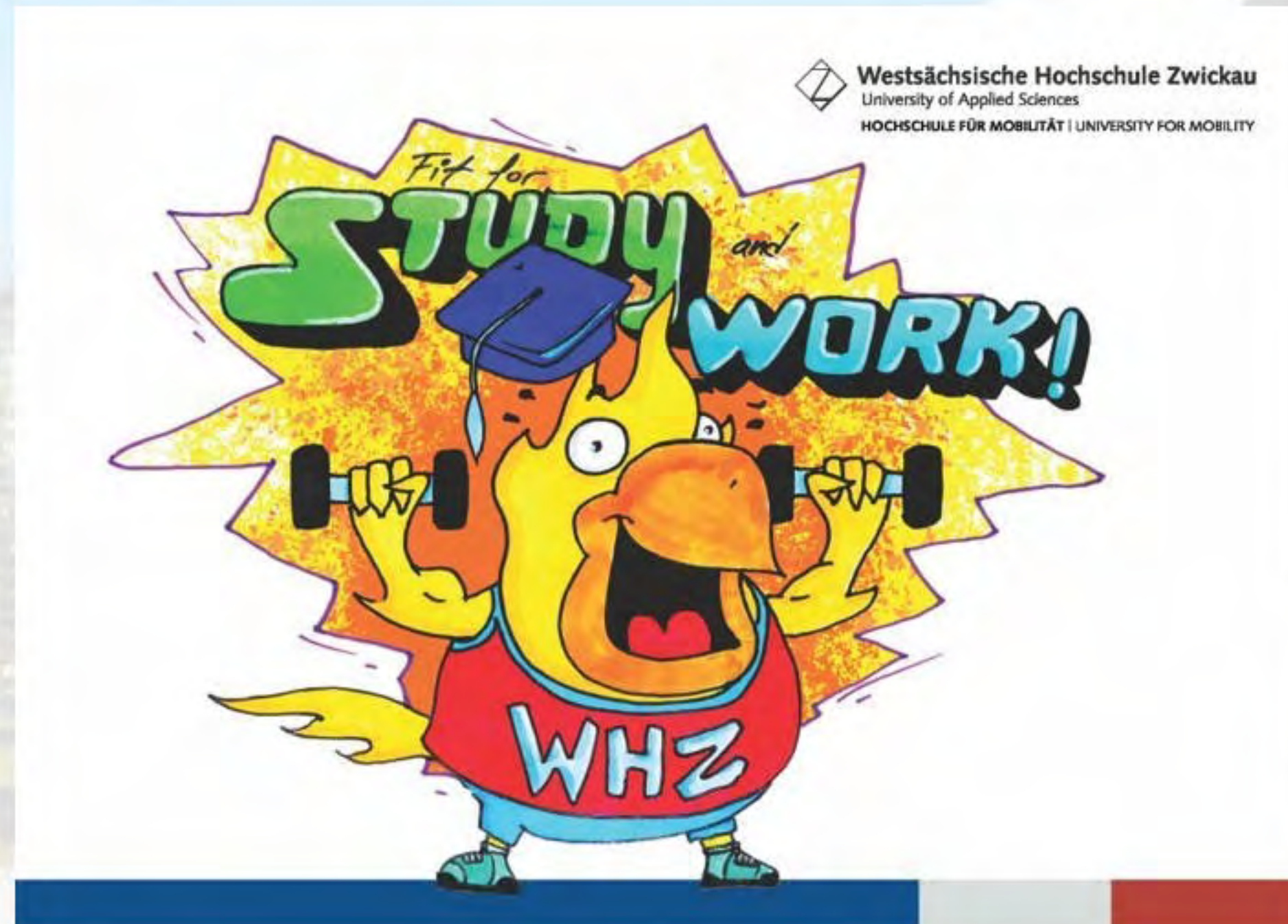


# Language tandem programme

- Check the mail from the tandem program coordinator Dr. Thomas Edeling
- Find all relevant information on the website (link in the chat)
- Interested? Sign up via the matching platform "Matorix"







# Fit for study and work

Online-Workshops

German and English tutorials for internationals

Push your region – push your skills





## Online-Workshops

- 27.10. (Kennen)lernen durch Engagement
- 18.11. Finde Deinen Lernpartner!
- 29.11. Selbstmanagement
- 08.12. Dos and Don'ts im Studium und Berufseinstieg – Internationale Alumni berichten
- 12.01.2022 Lerntechniken
- Further information and registration option on the OPAL learning platform





# German and English tutorial for internationals

- Already have a good level of German (at least B1+/B2)?
- Improve German in addition to your studies and/or the language courses
- Communication in everyday study situations, discussing and reading texts together
- Get in contact with the tutors: Antonia (German), Dennis (English)





Rico Gruner (li.) und Hugo Schwarzbeck (re.) vor ihrer Wand im Hauptbahnhof

**Get involved besides your studies!**



# Advantages

- put knowledge from studies into practice
- make a contribution to society
- improve your language skills
- make new contacts
- possibly get credit points



## Ein neues Marketingkonzept für den Afrikaverein in Zwickau (Aviz e.V.)

Der AVIZ e.V. ist auf der Suche nach neuen Ideen und Mitgliedern. Zwei internationale Studierende der WHZ unterstützen...

[weiterlesen](#)



## Digitale Länderabende – Internationale Studierende berichten über...

Organisiere einen digitalen Länderabend über Dein Heimatland. Gib einen Einblick in Deine Kultur, Sprüche und alles...

[weiterlesen](#)



## engagiertestadt

### Artikel für das Magazin „grenzenlos“

„grenzenlos“ ist ein mehrsprachiges Magazin zur interkulturellen Kommunikation...

[weiterlesen](#)



### Der Zwickauer Hauptbahnhof wird bunt!

Der Zwickauer Hauptbahnhof ist das Tor von Zwickau für alle Zugreisenden. Aktuell wirkt er etwas grau und...

[weiterlesen](#)





# Career Service der WHZ



**Der *Career Service* der Westsächsischen Hochschule Zwickau  
als Schnittstelle zwischen Hochschule und Unternehmen**  
*Interface between university and companies*



# Möglichkeiten für Studierende

## *Opportunities for students*



**Vermittlung von Praktika und Nebenjobs**

*Placement of internships and part-time jobs*

**individuelle Beratung / Bewerbungsmappencheck**

*individual consultation / application portfolio check*

**Workshops zur Vorbereitung auf den Berufseinstieg**

*Workshops to prepare for the start of your career*

[www.fh-zwickau.de/careerservice](http://www.fh-zwickau.de/careerservice)



# Ansprechpartner des Career Service der WHZ

## **Markus Haubold**

Beratung und Workshops, Unternehmenskontakte, Jobbörse

+49 375 536 1343

## **Elisabeth Wandtke**

Unternehmenskontakte, Projekt: Talenttransfer

+49 375 536 1055

## **Susann Kühn**

Beratung internationaler Studierender, Projekt "Study and Stay in Zwickau"

+49 375 536 1699

**[careerservice@fh-zwickau.de](mailto:careerservice@fh-zwickau.de)**

**[www.fh-zwickau.de/careerservice](http://www.fh-zwickau.de/careerservice)**



# Quiz

What do you know about Zwickau?





# In which Federal State Zwickau located?



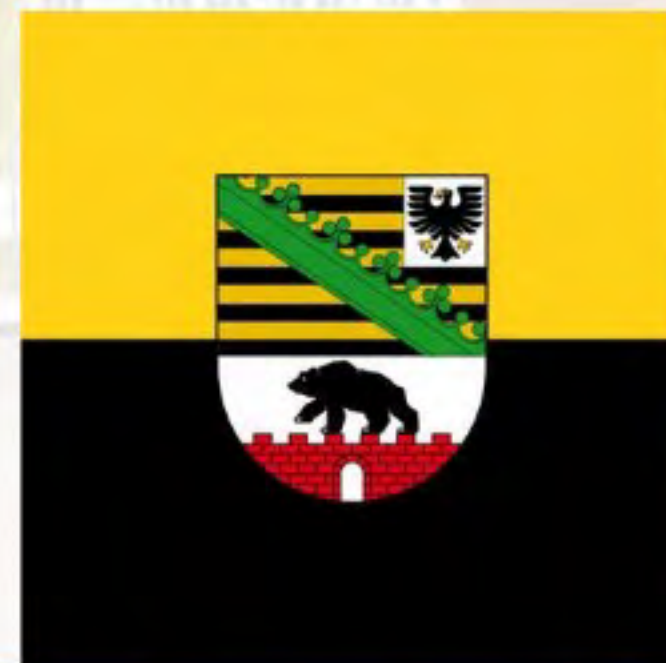
5



Lower  
Saxony



Saxony



Saxony-  
Anhalt



# Some facts about Zwickau

- Located in Saxony in the eastern part of Germany
- First mentioned in 1118 in a charter
- Fourth largest city in Saxony (after Dresden, Leipzig and Chemnitz)
- Largest city in Germany beginning with Z...





# What is on the Zwickau Coat of Arms?



Ducks

Geese

Swans



# Founding myth of the city

- Erasmus Stella, Mayor in the 16th Century, invented the myth
- He said that the name "Zwickau" is from the Latin word for swan "Cygnus"
- The Swan is now on the Coat of arms and the Swan Lake is a famous sight in Zwickau





# What is Zw known for?



Cars



Schwibbögen



Musical  
composers



# All answers are correct!

- Zwickau has been an important centre of car production since 1904
- Schwibbögen are a common sight in the Christmas time. In the past, they were used to welcome mine workers on their way home from the mines.
- Robert Schumann was born in Zwickau in 1810 and became a famous composer later in his life





# Leaderboard





# Upcoming events

- 15.10. Welcome event "Get Together"
- 16.10. Excursion Saxon Switzerland
- 11.11. Reception with the Mayor Ms Constanze Arndt
- December / January Skiing in Schöneck







# Thank you!

We wish you successful studies and a wonderful time in Zwickau!

